



## Bewan iBox Cable C5200 Series DOCSIS® 3.0 Wireless eMTA

- Fixed and Mobile Convergence (FMC)
- Home Automation and Surveillance
- File sharing (on local USB mass storage and built-in web page)
- SIP, and MGCP simultaneous management
- SNMP and TR-069 for remote management
- Wi-Fi 802.11b/g/n with multi-SSID
- 2 FXS ports for multiple phone connections
- 4 Gigabit Ethernet ports
- 1 USB 2.0 host port
- LAN port can be used as a WAN port
- Euro-DOCSIS® / DOCSIS® 3.0 / 2.0 / 1.1 / 1.0 compliant
- EuroPacketCable / PacketCable 1.5 compliant

## Bewan iBox C5200 Series

Future proof multiple play residential gateways with integrated Euro-DOCSIS® 3.0 / DOCSIS® 3.0 wireless eMTA that offer an unparalleled range of value added services.

The Bewan iBox Cable C5200 Series include a range of VoIP wireless residential gateways delivering non-stop high performance Internet connection with speeds up to 200Mbps over Euro-DOCSIS® / DOCSIS® interface. They also facilitate home networking with the integration of a Wi-Fi 802.11n access point and a 4-port Gigabit Ethernet switch.

### All-in-one device

The Bewan iBox Cable C5200 Series consists of a range of Voice over IP Wireless Residential gateways that integrate cable modems to implement directly VoIP phone calls through Cable Modem Broadband Network services thanks to their built-in PacketCable 1.5 and Euro-DOCSIS® / DOCSIS 3.0® compliant specification.

Equipped with two standard phone ports, the Bewan iBox Cable C5200 Series can easily provide low-cost, long-distance calling, faxing, and a host of advanced services.

All the models of the range are MGCP/ SIP compliant and support major VoIP Softswitch vendors' Call Management

systems. Their voice support includes hardware based Quality of Service (QoS), voice compression, echo cancellation, dynamic latency (jitter) buffers, silence suppression and comfort noise generator.

### Fully customizable firmware

Bewan's R&D department fully masters Cable, Wi-Fi and VoIP technologies to ensure a full control of the firmware development. Bewan meets the major telecom standards and answers the specific needs of operators for fully customized solutions.

With the R&D department based in France, Bewan guarantees a direct relationship with operators' technical teams with neither cultural gaps or time zone issue.

### Comprehensive router

The Bewan iBox Cable C5200 Series integrate a 4-port Gigabit Ethernet switch as well as an IEEE 802.11b/g/n wireless access point to be used as a Wireless Residential or SOHO Cable Modem. The ability to route data information into the broadband network enables users to easily extend their local network via wire or wireless.





### Fixed and Mobile telephony via the Internet

The Bewan iBox Cable C5200 is a modular VoIP gateway that combines fixed and mobile telephony via Cable connection seamlessly, whilst providing unrivalled sound quality and convenience. It supports the SIP and MGCP protocols. Equipped with 2 FXS ports, it enables users to make and receive calls over the Internet with either their landline or Wi-Fi mobile phone.

### User-friendly GUI

The Bewan iBox Cable C5200 Series offer a simple and user-friendly graphical user interface (GUI) to simplify diagnostics. The user interface is identical to the one used by the technical support team so both parties share the same information. This feature helps reduce the time necessary to identify and correct issues.

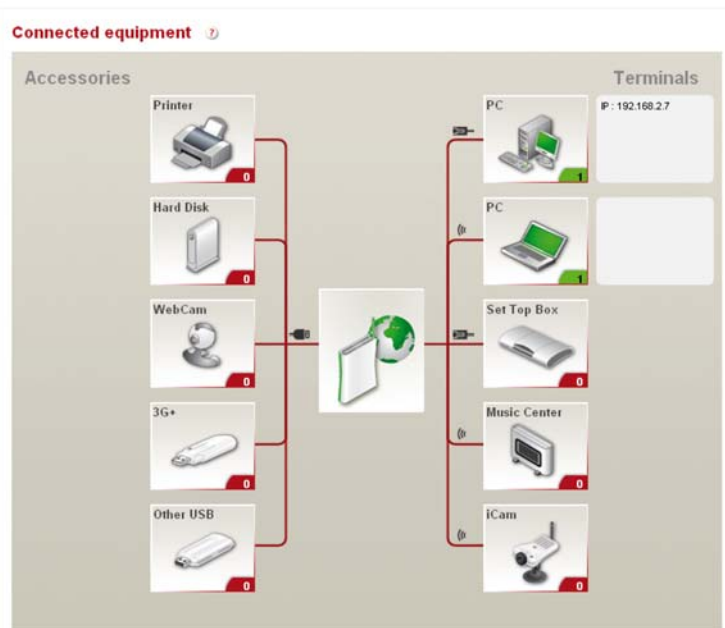
### Secure wireless access point

The Bewan iBox Cable C5200 Series benefit from a built-in network access point for standardised high-performance wireless connections. The access point presents a wide variety of integrated features, including multi-SSID, WDS repeater mode (Wireless Distribution System) and WPS (WiFi Protected Setup). The default security settings meet the most stringent requirements: WEP, WPA/PSK, WPA/ 802.1x, WPA2, MAC address access filtering, SSID masking.

### SNMP and TR-069 management

The Bewan iBox Cable C5200 Series supports the SNMP protocol to enable operators to manage and update their installed base remotely.

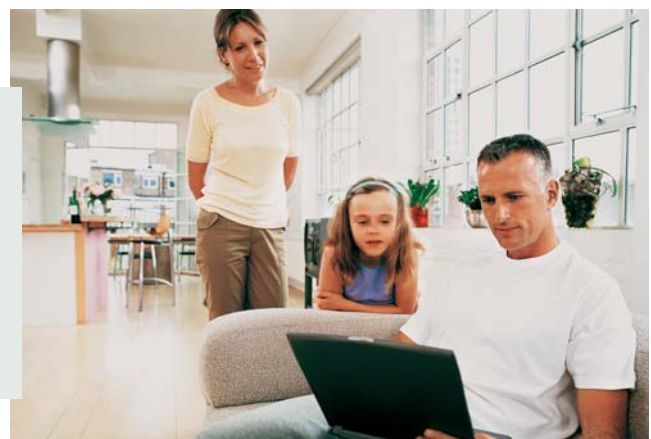
The Bewan iBox Cable C5200 also supports the TR-069 that easily manages and controls the digital home certified accessories and applications for a highly efficient control of the entire operator's Value Added Services offering. This function is crucial as it provides a simple and cost-efficient way of rolling out software updates for subscribers' modems, ensuring optimum ROI.



User-friendly GUI with LAN map

### Bewan Eco-system

To ensure our customers receive the best possible support for their business, we not only supply innovative and customizable solutions using cutting edge hardware and software technology, we also provide a complete range of accessories: Wi-Fi camera (Bewan iCam), Digital Media Player (Bewan iMedia), Powerline adapters, etc.



## HomeCenter – Multimedia, Home Automation and Surveillance services

With one USB port integrated on the electronic board, Bewan iBox Cable C5200 Series enable operators to develop a host of customer services, such as local or remote file and printer accessibility and sharing, video surveillance system control and immediate, continuous access to the Internet.

### File Sharing

Users can backup their files on a mass storage unit connected to the Bewan iBox Cable C5200 Series. Various file transfer protocols are supported: FTP , HTTP, HTTPS, Samba.

The iBox supports USB sticks, Self Powered (or not) USB hard disks and several disk formats: FAT, FAT-32, NTFS , EXT2 or EXT3.

As the Bewan iBox is always switched on, users can download their files whenever from whatever IP equipment (PC, mobile phone, etc).

### Photo and video Album

With Bewan HomeCenter, users can organise their files into photo albums and video libraries, handily stored on a USB disk hooked up to the iBox or on their ISP's servers. The personal web site is automatically created and published on the Internet. The content can be viewed by friends, family or anyone else with permission.

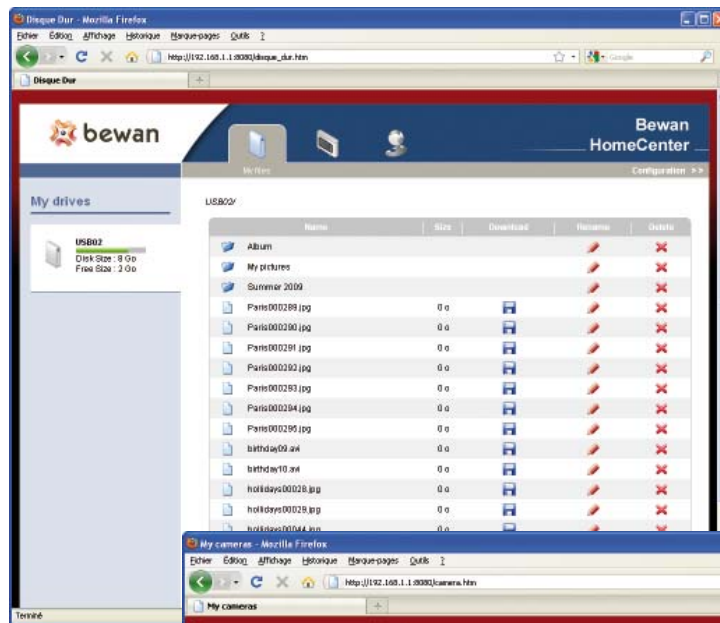
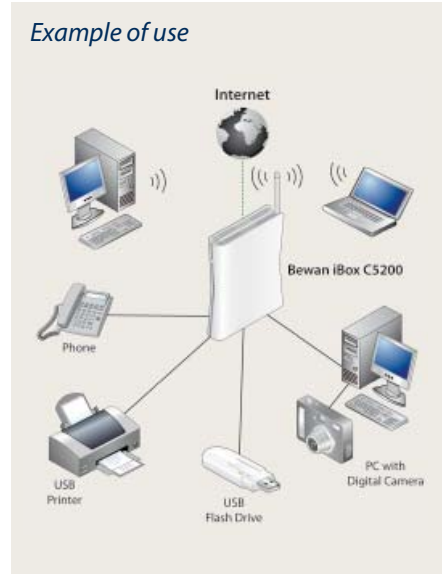
### Digital Jukebox

With Bewan HomeCenter, creating your very own digital jukebox is child's play. Users simply gather all their favourite hits on a USB disk hooked up to the iBox Cable C5200 and make their own music compilations. They can then listen to them at home, or over the Internet. They can even share their musical tastes with friends, by allowing them to access the Home Center over the 'Net.

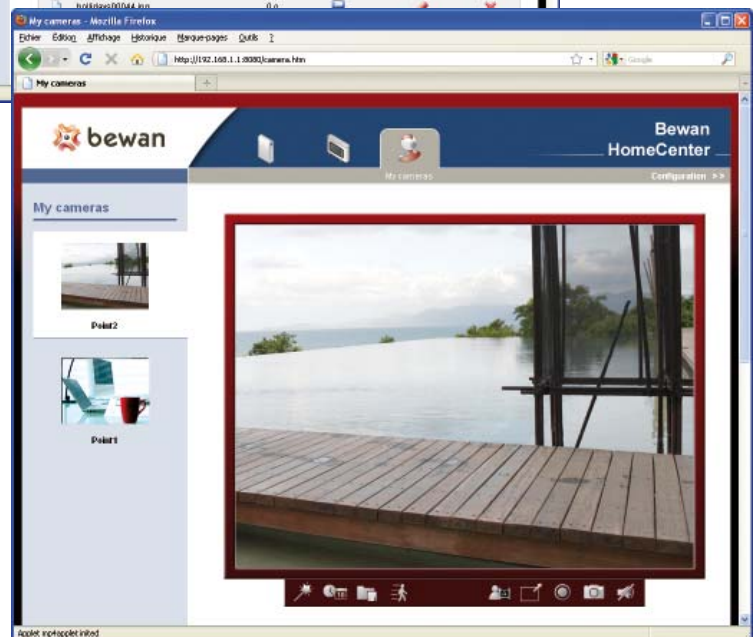
### Home Automation and security

The iBox Cable C5200 Series and Bewan HomeCenter have been designed to allow users to retain control over their home's automated systems, even when they are out or travelling. All that's required is an access to the Internet or a mobile phone to communicate with the iBox, and find out the status of the various home systems connected: environmental sensors (humidity, temperature, smoke detector), security sensors, remote control power switches, surveillance cameras, etc.

As a complement to the iBox, the Bewan iCam is a complete solution for deterring would-be burglars and intruders. The gateway's web interface can be configured to switch on lights in the home whenever the iCam detects movement.



File sharing



Multi-camera Video surveillance

### Technical characteristics

#### Protocol Support

- (Euro-)DOCSIS 1.1/2.0/3.0
- (Euro-)PacketCable 1.5
- WiFi: 802.11b/g/n
- SIP or MGCP 1.0
- SNMP V1, V2c, V3. IGMP V3

#### Reception-Demodulation

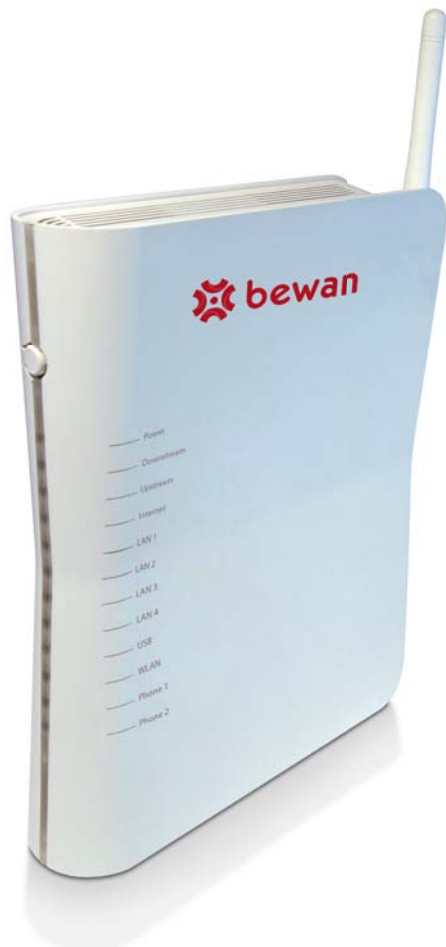
- Demodulation: 64QAM, 256QAM
- Channel Width: 6 / 8 MHz
- Input frequency: 91 – 1002 MHz
- Data Rate:
  - +222.48 (+200) Mbps with 4 Downstream channel bonding (EuroDOCSIS)
  - +171.52 (+152) Mbps with 4 Downstream channel bonding (DOCSIS)
- Signal Level: 17 dBmV

#### Transmitter-Modulation

- Frequency: 5 – 65 MHz
- Modulation: QPSK, 8QAM, 16QAM, 32QAM, 64QAM, and 128QAM
- Data Rate up to +122.88(+108) Mbps with 4 Upstream channel bonding

#### Router Functions

- Web base interface for configuration and management
- MAC address filtering based on source addresses in the frame
- IP filtering based on source and destination addresses in the packet
- DHCP, TFTP, and ToD clients, provide device auto configuration
- DHCP server support for internal network IP addresses
- Firewall with Stateful packet inspection technology
- VPN pass-through
- Complete NAT software implemented with port and address mapping



### Technical characteristics

#### Telephony

- Caller ID in either DTMF or FSK
- T.38 Fax Relay
- Simultaneous Telephony on two independent RJ11 ports
- G.165/G.168 Echo cancellation up to 16ms
- Codecs: G.711, G.723.1, G.729A/E

#### HomeCenter

- Built-in ready to use personal Web Server (http/https)
- Blog
- File Sharing (HTTP/HTTPS, FTP, Windows)
- Media Sharing (documents, pictures, video, music)
- USB Printer Sharing
- Home automation USB kit support

#### Management

- Web-based control configuration and management
- Easy-to-read LED's clearly display network status and activity
- Power on self diagnostic
- Private mibs for extended support on:
  - DOCSIS
  - EMTA
  - SIP
  - Router Management
  - WiFi Management

#### Connectivity

- RF F-connector for DOCSIS connection
- 4 Ethernet ports 10/100/1000Mbps Base-T
- 2 RJ-11 telephony connectors
- USB 2.0 Host Interface
- 12V DC Power Jack

#### Hardware

- 12 status LEDs: Power, Downlink, Uplink, Status, Ethernet 1/2/3/4, USB, WLAN, Line1 / Line 2
- Factory default reset button
- USB 2.0 Type A connector
- Product metrics: 175mm (H) x 86mm(W) x 160mm (D)
- Weight: 320g +/- 10g (Approximately)

